



Make a date in your 2017 Calendar! FOLAR's AGM & ANNUAL SEMINAR 2017

SATURDAY 1 APRIL 2017 Seminar Topic: Landscape (architectural and management) education past, present and future

Location: MERL, Redlands Road, Reading, Berkshire RG1 5EX

The history of landscape education in the UK, with a few honorable exceptions, has been little documented. It is intended that this seminar will encourage the recording of what otherwise might be lost in terms of memory and oral history, and the writing of more histories of landscape courses in the decade or so leading to the **Centenary** of the founding of the Landscape Institute (as the ILA) in **2029**. It almost goes without saying that one ambition of the day is to record something of the history of the landscape architecture and landscape management courses at the University of Reading.

MERL BURSARIES 2016/17

This coming year MERL are to offer bursaries to encourage use and engagement with their landscape collections.

STUDENT TRAVEL BURSARIES

The purpose of the student travel bursaries is to enable students to access collections held at Reading related to landscape, including landscape design, management and architecture.

MERL are offering two bursaries of £150 each and any student in part or full-time higher education can apply. Applications will be by email to merl@reading.ac.uk (please put "Landscape Bursary" in the subject line). Interested applicants should submit a CV, and a short statement (max 400 words) outlining their interest in and current work on landscape, and stating how a bursary would be beneficial to their studies. Applicants should identify those materials in the

archive that would be of most benefit to them.

ACADEMIC ENGAGEMENT BURSARY

The purpose of this award is to encourage academic engagement with collections held at Reading related to landscape, including landscape design, management and architecture.

Successful proposals will attract a stipend of £1,000. The funding can be used to offset teaching and administration costs, travel and other research-related expenses. Appropriate facilities are provided and the successful applicant will be encouraged to participate in the academic programmes of the Museum.

The intention for this award is to create an opportunity for a researcher to develop and disseminate new work in the broad arena of landscape. Applications will be by email to merl@reading.ac.uk

(please put "Landscape Bursary" in the subject line). Interested applicants should submit a CV and a statement (max 800 words) outlining their interest in, and current work on, landscape.

TIMETABLE

The timetable for the award of these bursaries will be:

01 Sept. 2016 applications open

31 Oct. 2016 applications close

30 Nov. 2016 successful candidates announced

31 July 2017 any work will need to be carried out and monies claimed by this date

For informal enquiries please email:

c.l.wooldridge@reading.ac.uk

The Museum of English Rural Life reopens on 19 October 2016

MERL will reopen this Autumn after a £3million redevelopment project [Our Country Lives](#), which has radically transformed the museum's public displays.

The new museum aims to challenge perceptions about rural England by revealing the historical and contemporary relevance of country life.

Inside this issue:

F O L A R

FOLAR'S 2016 AGM AND SEMINAR	2
REMEMBERING ACHIEVEMENT: OBITUARIES	3
RESEARCH: POST MODERN LANDSCAPE ARCHITECTURE	4
RESEARCH: MICHAEL BROWN COLLECTION AT MERL	5
LANDSCAPE CONNECTIONS	6
THE LI LIBRARY COLLECTION AT MERL	7
THE FIRST 3 YEARS OF THE LANDSCAPE COLLECTIONS AT MERL 2013-2016	8

FOLAR'S AGM & Spring Seminar held on 19 March 2016

New Towns, Landscape and Gordon Patterson - Celebrating mid 20C Design

FOLAR held its 3rd AGM at MERL on Saturday 19 March with the best attendance yet and an equal number of interested others and FOLAR members who sent their apologies. The draw, of course, was probably not the AGM (however the FOLAR committee would like to think otherwise!) but rather the seminar topic that had been arranged for the afternoon and the quality line up of speakers (thanks to Annabel Down who did the organising). We were delighted to welcome **Laurie Fricker** for the first time to a FOLAR event. He had travelled some distance to

attend both the AGM and the seminar itself and we hope very much to stay in touch with someone who has such knowledge of the post war landscape profession, the people and the education system.

The speakers were:

Elain Harwood who gave a talk on '*Housing, Traffic and Landscape*'. As a senior architectural advisor at Heritage England, active member of the 20th Century Society and writer she gave us a fascinating and erudite view of the landscape planning of new towns.

Tom Turner based his talk on '*Landscape planning for London and the New Towns in the 1940s*' around a video and government sponsored film about the pleasures of settling in the spacious, green new towns.

Oliver Rock of HTA Landscape Design Practice won the LI's Heritage and Conservation Award in 2011 for their sympathetic restoration of Stevenage Town Gardens and it was this scheme that he spoke about in his talk. He emphasised the importance of getting the research done first and properly before proceeding to reimagine and restore schemes such as Jellicoe's Town Gardens.

Finally, **Caroline Gould**, the University's Deputy Archivist, was invited to give us a talk on relevant material in the MERL's special collections and we all thoroughly enjoyed her decision to show a B&W information video from the Land Settlement Association Archive (deposited at MERL). The majority of us had probably never heard of the Land Settlement Association, established in 1934, so it was fascinating. The video, which was by turns hilarious and rather sad, was so of its time. We watched a bossy ex-army man assuming total ignorance on the part of the men who were corralled to sit and listen to him, while hand on hip (and jodphured leg on chair) he instructed them about what was good for them; stilted shots of women, hands deep in washing and general drudgery, explaining optimistically how wonderful it all was. At the end Caroline told us that the experiment, carried out with the best of intentions, to settle unemployed industrial workers from depressed areas was considered a failure, despite staggering on as an Association until the early 1980s.

A lively question and answer session after the talks rounded off the day nicely and, listening to the talking that went on in the breaks FOLAR can be pleased that we have organised another successful and interesting event. Thanks to all the speakers and to Annabel for organising the seminar so successfully despite the setbacks she experienced along the way.

Postscript: It was a shame that, in the end, **Gordon Patterson** was

unable to attend the seminar but the good news is that, as a result of advertising this seminar on our website, a researcher got in touch and plans to visit MERL to look at the Gordon Patterson collection and also is to conduct an interview with Gordon at his home. It is hoped that a copy of that interview will be deposited at MERL in due course. More on that

research in a future issue.

JOHN THOMPSON (1941-2015)

Landscape architect



It was John who encouraged Gordon Patterson to donate his landscape archive to MERL late last year. We owe John a big debt for that alone but his wider contribution to the public good should be acknowledged here, and has been already online. See, for example, obituaries on the Guardian and the Oxford Mail websites.

John had agreed to be one of the contributors to FOLAR's March 2016 seminar but sadly, we were never to hear him speak as he died suddenly in late December 2015.

As the city of Oxford's landscape architect he was responsible for planting an estimated 10,000 trees in and around the city, a legacy of which he was rightly proud. After retirement he continued to contribute on a voluntary basis both locally and nationally for, among others the Garden History Society and the Landscape Institute.

FOLAR hope that, in time, John's family will consider offering a sample of his work to add to MERL's landscape archive.

REMEMBERING ACHIEVEMENT: Obituaries

It is an inevitable and important part of FOLAR's role, alongside that of the Landscape Institute and others, that we help to record for posterity the work and lives of our fellow landscape professionals who have recently died. Usually a simple google search will suffice to find obituaries of the better known names and which, ideally, are always written by someone who knew the particular individual well. The institutional records of the Landscape Institute now deposited at MERL include membership records going back to its earliest days and can provide useful background information on any individual for anyone looking to compile an obituary today (though please note that more recent records are embargoed due to data protection).

We could put in full obituaries into this and future issues of the newsletter. The danger of doing so are twofold. Firstly, we would leave space for very little else in some issues and the issue content would then be unbalanced. Since, in the majority of cases, an obituary is already available elsewhere online, this seems a pointless duplication. Secondly, we could omit an obituary that others feel should be acknowledged here and, while we could correct this omission in a subsequent issue, we could still be seen as making value judgements about a particular person's worth professionally. That too seems something to be avoided. So FOLAR's compromise solution is to feature one or two vignettes, as here for John Thompson and Mark Turnbull, and then direct our readers to other places to search out more.

In addition, and since this is FOLAR's first attempt at publishing these short 'obits', we also record here a small number of Institute members who died in the last few years and whose varied contributions to the landscape profession and the public good are recorded elsewhere. One thought: in some cases these online obituaries and personal histories may disappear without trace should the content of a particular website be refreshed or worse becomes obsolete and its content is taken down. It's one small reminder that in 2016 there is still no one archiving method which guarantees the preservation of these 'born digital' records for the long term and that much created in the 1980s and 1990s, if not also printed on paper, may already be lost.

Members of the Landscape Institute (deceased):

Ford, Elizabeth (Liz) (1940-2012) *huge supporter of retaining the Institute's library and archives. Obituary, LI website*

Hopkins, John (1953-2013) *London Olympic Park 2012, obituaries: LI website, The Guardian, BBC Radio4's 'Last Word'*

Marshall, Frank (1928-2012) *ensured the Milner White records now deposited at MERL were kept for future research. See LI website*

Smith, Alan (1931-2016) *Obituary on LI website, see also Karen Fitzsimon's post at the end of the obituary notice.*

and

Jack, Janet (1934-2016) *the architect and landscape designer behind the Alexandra Road scheme in London. Obituary: Architects Journal website (pay to view). Janet Jack archive donated to the Garden Museum, London*

MARK TURNBULL (1943-2016)

Landscape architect



'Mark was a prominent practitioner, mentor and friend to many across the landscape profession in Scotland, the UK and beyond. In his role as Chairperson Mark reinvigorated the Landscape Institute Scotland from a Branch that was in the doldrums. His energy, enthusiasm and drive to promote Landscape Architects and Landscape Architecture in Scotland was astonishing and inspirational. He was a guiding spirit for us all, always ready to listen, engage people in our cause and fight for a stronger profession. The work he has achieved for both the Landscape Institute on the Board of Trustees and Chair of the Technical Committee, and as Chairperson of this Branch over the last few years will never be forgotten.' **LI Scotland**

Mark was also a firm supporter of the principle of a professional Institute holding its own archival record. As he wrote in an email to me* in 2013: **'An Institute without an active archive is not a learned society and lacks any real educational value'**
MT to *P Beckett

RESEARCH: Post-War Modernist Landscape Architecture

**Manchester School of Architecture (Manchester Metropolitan University):
Dr. Luca Csepely-Knorr
Dr. Amber Roberts**

'WE WOULD BE DELIGHTED TO HEAR FROM ANY RESEARCHERS THAT ARE UNDERTAKING WORK ON SIMILAR THEMES OR PRACTITIONERS THAT WERE ACTIVE IN THE POST-WAR PERIOD'

The overall objective of the project is to uncover theoretical issues and international influences in the field of landscape architecture during the post-war modernist period. The post-war era brought major changes in landscape architecture. These shifts, associated with socio-economic and technological development, resulted in new types of projects for the profession. It was a time when "official adoption of landscape architects to work on new towns, highways, industrial sites, reservoirs, university campuses and power stations"[1] occurred and, with the formation of the International Federation of Landscape Architects (1948), international professional discourse also began. This project aims to shed light on less researched aspects of the time: the design of landscapes in new towns and along new infrastructural elements such as power stations, industrial areas and motorways.

The Landscape Institute archives donated to MERL holds an immensely rich collection of designs from this period, and the collection is an extremely valuable source of the research. The first holdings to be looked at in detail will be the **Michael Brown Collection**. Brown (1923-1996), an Edinburgh-born architect and landscape architect whose work combined leading Scottish and American spatial principles in the mid-century: his idiosyncratic approach synthesized the emerging theories of the time through his work with critically acclaimed designers and scholars such as Sir Basil Spence, Dan Kiley and Ian McHarg. Brown's projects, covering all scales of landscape architecture, are of special interest due to his commitment to integrating the theories and practices of both disciplines and countries resulting in a body of work that was both inventive and realistic. The first findings of the research will be presented at the 2017 Annual International Conference of the Society of Architectural Historians in Glasgow*.

We would be delighted to hear from any researchers that are undertaking work on similar themes or practitioners that were active in the post-war period.

[1] Powers, A: *Landscape in Britain* in *The Architecture of Landscape 1940-1960* ed. Marc Treib, University of Pennsylvania Press, 2002, p. 79

Dr Luca Csepely-Knorr is senior lecturer at the Manchester School of Architecture (MMU). Luca lectures on 20th Century landscape architecture and urban design history and theory. Email: L.Csepely-Knorr@mmu.ac.uk

Dr Amber Roberts is a research consultant based in Glasgow. She recently completed her PhD in landscape architecture at MMU. Over the summer, Amber has been liaising with FOLAR and LI Scotland about a possible collaboration to promote 20th century landscape archives at both MERL and deposited in Scotland, to the international audience expected at the SAH Annual Conference to be held in Glasgow in June 2017.

*For details of the Society of Architectural Historian (SAH) 70th Annual Conference see www.sah.org

ERRATUM**RESEARCH: SYLVIA CROWE**

Apologies to **Wendy Tippett**, author of '*Unloved Landscape. The Bristol Schemes of Sylvia Crowe*' for having distorted this drawing by Wendy Powell for Sylvia Crowe & Associates when reproducing it in the last issue of the FOLAR newsletter. (December 2015). Here is the drawing this time reproduced correctly.

Page 4



The Michael Brown Archive Collection at MERL

The LI library and archive was asked by Roy Winter, executor of papers and drawings for Michael Brown's estate, if we were interested in collecting any of his material. Most people who have lived in London between the 1960s-1990s will, knowingly or otherwise, having lived in, walked through or travelled past Michael Brown work. For me the tell-tale signature element was the dark blue brick wall that starts vertical and ends up horizontal. Many designers tried often with less success to recreate this in their own work. He was supreme at ground modelling, creating meaningful places, and understanding and selecting the right trees for projects, not just regular uniform standard nursery trees, but ones with character, lopsided growth, bendy trunks, or low branches.



Top: Lancaster Road, next to Latimer Road underground Station, London 1984

Middle: Brunel Estate, opposite Westbourne Park underground station, London 1974

Below: Field End, Twickenham, London 1974. Project dates from time when Michael Brown worked for Eric Lyons (SPAN housing)



map nibbled by a mouse) filling two outdoor timber buildings; A4 detail sheets showing this brick walling detail, his brick playgrounds, nuts and bolts hard landscape details, job files, photos, slides, correspondence, even corrected drafts of his own letters to be retyped, all this was there to sort through. It didn't seem as if anything had not been saved. The other very interesting thing is the number of well-known landscape architects who have passed through his office, revealing it as much a training school as Lovejoy's and Clouston's were.

It was a mammoth task, it took three days to assess, collect and ruthlessly dispose. Roy helped hugely, as he had worked with Michael on Redditch New Town; (he also took the slides to sort out). Despite lots of encouragement Michael Brown was not considered important enough to have a monograph dedicated to him, but his time will come.

Annabel Brown

He had trained in landscape at University of Pennsylvania – winning a scholarship and opting to do Furniture design to add to his first degree in architecture, but was offered instead a place on the landscape architecture course under Ian McHarg. The influence of McHarg was huge both in his working methodology and his ideas, and this is clearly apparent.

I considered it a great privilege to add his papers to our expanding collection at the Landscape Institute. He had been meticulous, I found all his drawings labelled and stored in cardboard rolls, working drawings, sketch designs, rejected ideas, presentation plans, hundreds and hundreds, (and only one drawing, a geological



MICHAEL BROWN
'MASTER OF THE BATTERED BRICK BANK'

Tom Turner
www.gardenvisit.com

'SPAN HOUSES IN A BIRCH FOREST, WITH TREES VERY CLOSE TO THE BUILDINGS!'

Colin Moore

Newsletter

LANDSCAPE CONNECTIONS

LANDSCAPE CONNECTIONS

ILA

CECIL & LILIAN HUGHES

GETRUDE JEKYLL

GEOFFREY JELlicoe

A VILLA IN TUSCANY

AN ENGLISH PRIORY GARDEN

One of the pleasures of being involved with FOLAR is that a simple enquiry through our website leads to some fascinating connections and takes you in unexpected directions.

In the last issue, FOLAR published a captioned photograph of a group of ILA members attending the first ILA exhibition at Broadway, Worcs. Our newsletter was put online and a few months later FOLAR received the following email from the Friends of Orpington Priory in Kent:

'Recently I googled 'Cecil Eldred Hughes' and followed a link to your website and was delighted to see a photo of CE Hughes with Geoffrey Jellicoe. I was aware that the two gentlemen were acquainted as Geoffrey Jellicoe is recorded as designer of the Theatre Garden at The Priory, Orpington, which was home to the Hughes family from 1919 until Cecil Hughes' death in 1941 (it is listed)'. The enquirer went on to ask if there might be further information available on Cecil and his wife Lilian Hughes and their garden.

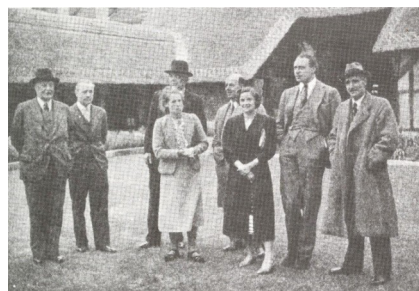
Thus, at a stroke, we found out the full name of CE Hughes, that his wife was called Lilian and that Jellicoe had been involved with the design of the Priory's Garden pre-war.

Lilian Hughes (1880-1953)
The name of Cecil Hughes' wife may seem an irrelevance until, through a further search online, we discover that Lilian was not only 'a friend of Gertrude Jekyll' (who died aged 89 in 1932) but that Lilian's surname before her marriage was 'Benn'. In fact, she was the sister of William Wedgwood Benn and therefore MP Tony Benn's aunt and former environment minister Hilary Benn's great aunt!

Cecil Eldred Hughes (1875-1941)

Cecil Hughes served as the ILA's first honorary treasurer and will have played an important role in helping to establish the Institute pre-war and, one can speculate, brought to the fledgling ILA, as others did, access to members of government through their personal contacts.

As his contribution to the 1938 Broadway exhibition, (the first of its kind to promote the ILA and the art of landscape architecture) Hughes built a scale model of the Villa Gamberaia, near Florence (*Landscape & Garden*, Autumn 1938, p150)



Cecil Eldred Hughes is shown on the left side of the picture standing next to Geoffrey Jellicoe

Villa Gamberaia, Italy

After Hughes' death in 1941 Lilian donated several of his paintings to the V&A. From the subject matter of those paintings it is clear that the Hughes' travelled extensively in pre-war mainland Europe and are likely to have visited the Villa Gamberaia at some point in their travels. Jellicoe, with Jock Shepherd, certainly did. See the garden plan of the Villa in their 1925 book '*Italian Gardens of the Renaissance*' - the first edition title page with the ARIBA under Jellicoe's name written in rather than printed! (see opposite)

As recently as January of this year, the Villa was featured on the BBC2 series: Monty Don's *Italian Gardens* and

more information can be obtained from the Villa's own website:

www.villagamberaia.com

The Priory Gardens, Kent

After Cecil Hughes' death the Priory and its gardens were first leased and in 1959 transferred into public ownership. The Priory then became a museum in 1965 with an unsympathetic extension built on to the side to house the museum; there was a later change of use to a public library. This library was relocated in 2011 and the building has remained empty since that time. The gardens continue to be well used but in May of this year

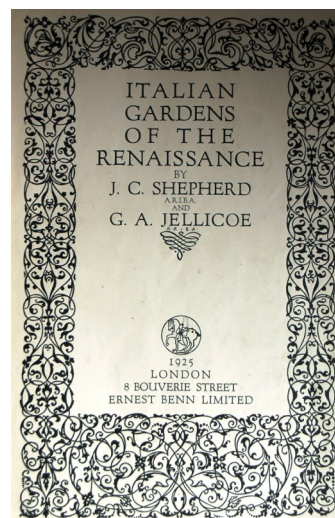
the local authority (Bromley) decided to dispose of the Priory complex and to include within that sale 'surrounding garden land'.

The future for this former private garden, an early example of Jellicoe's work, is therefore uncertain.

Penny Beckett

****Addendum:**
The publisher of the 1925 *Italian Gardens of the Renaissance* was Ernest Benn Ltd.

Ernest Benn's full name is Sir Ernest John Pickstone Benn 2nd Baronet, (1875-1954) brother of Lilian Hughes and the uncle of Tony Benn, MP



*Title page (1925 first edition) of Shepherd and Jellicoe's 'Italian Gardens of the Renaissance' ***

Image courtesy University of Liverpool SB 466.18.S54

THE LANDSCAPE LIBRARY COLLECTION AT MERL

Since the Landscape Institute's library arrived at MERL back in October 2013 a great deal of work has been undertaken to sort and catalogue the books, journals and reports of a collection that was described as 'one of Europe's largest specialist collections...relating to landscape architecture' (LI Yearbook, 2008).

Access to all of the former LI collection can be called up in the usual way via MERL's Reading Room, by visiting and, of course, by contacting merl@reading.ac.uk.



Above: Title page, The Complete Gardener, 1704

Closed Access: Most of the material is available on open shelves for readers to browse but some books have been added to MERL's closed access and are kept locked in environmentally secure stores. Currently, there are some 30 former Landscape Institute books in such closed access because they are considered rare or special in some way. This may be that the book has a signed dedication as in the example of Brenda Colvin's dedication to Susan and Geoffrey Jellicoe, shown here.

As Claire Wooldridge, MERL's librarian explains, the definition of what constitutes a 'rare' book can be a bit subjective: 'In essence, we would consider a book rare (and therefore suitable for closed, rather than open access) due to its age, scarcity, edition, market value, physical attributes (e.g. bindings), condition, provenance or historical interest.'

A selection of books in MERL's closed access

With well over 40 books from the LI library already in closed access at MERL, here is small selection to encourage looking closer:

Tripp, H. Alker, Town planning and road traffic, Bookplate: Bequeathed to the Library of the Institute of Landscape Architects by Maria Shephard. | 5UkReU . Ink stamp (on title page): Camp Concentramento P.G.n.82 UFFICIO PACCHI. | 5UkReU Label (verso of title page): Service des prisonniers de guerre, prisoner of war post, despatched by B. T. Batsford Ltd, with type-script text: The Camp Leader, British Prisoner of War, Campo. P.G. 82. P.M. 3200. Italia. | 5UkReU

'Discovering the Landscape: From London traffic to an Italian Prisoner of War camp'
See MERL's **Our Country Lives** at blogs.reading.ac.uk/merl and this fascinating blog posted on 28 July 2016 which speculates on the ownership and history of this copy of the book *Town planning and road traffic* before it came to be donated to the Institute by Maria Shephard and how, during these war years and afterwards paper for book printing remained in short supply.

Abercrombie, Patrick, *Dublin of the future: | b the new town plan, being the scheme awarded the first prize in the international competition.* Liverpool Univ. | Hodder & Stoughton, c1922
Signature of frontendpaper 'T. W. Sharp'

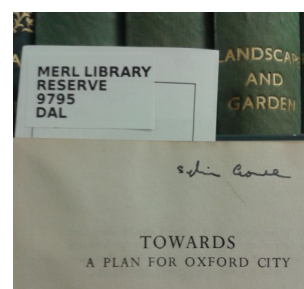
Price, Uvedale, Sir, 1747-1829, *An essay on the picturesque.....*, London:Printed for J. Robson, New Bond-Street,[1796-1798]. Modern half calf with marbled boards and endpapers. "Rebound July 2002 by Michael Ellison (PPLI)"

Milner, Henry Ernest, 1845-1906. *The art and practice of landscape gardening* London :Of the author, Dulwich Wood, Norwood, S.E., and Simpkin, Marshall, Hamilton, Kent, and Co. Limited, Stationers' Hall Court, |c1890. |f(Printed by Charles Dickens and Evans, Crystal Palace Press) Bookplate: Bequeathed by Richard Sudell, 1969.



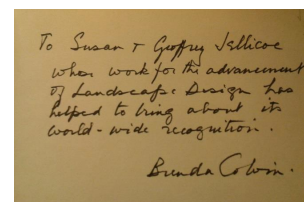
Below: Plate showing the Spring Cottage, Hofland, Whitenights, 1819

All Images © MERL/LI collection



Sylvia Crowe signature in Lawrence Dale's 1944 *Towards a plan for Oxford City*

All Images © MERL/ LI collection



Dedication to Susan & Geoffrey Jellicoe by Brenda Colvin and written in a copy of the second edition of her book *Land & Landscape* (first published in 1947). This second, hardback edition was published in 1970. The book, with its dedication, can be viewed at MERL, University of Reading.

The dedication reads: 'To Susan & Geoffrey Jellicoe Whose work for the advancement of Landscape Design has helped to bring about its world-wide recognition'

THE FIRST THREE YEARS of Landscape Collections at MERL 2013-2016

www.folar.uk

FOLAR c/o Land
Management Services,
Redhill Chambers,
2d High Street, Redhill,
Surrey RH1 1RJ

tel: 07597768931

email: info@folar.uk

In October, it will be exactly 3 years since the Landscape Institute's collection of library and archive material was transferred to the University of Reading. Funding by the Institute has enabled MERL to undertake significant collections management and development work. This is a brief overview:

Collections Management of the Landscape Institute's library and archive

Catalogued and sorted archive and library material

- 4,500 books processed and cleaned; the cleaning required as many of the library books had been packed in open storage crates for 5 years. 40+ books transferred to closed access; 22 linear metres (or 70 titles) sorted listed and available;
- 146 linear metres of LI archives catalogued on to online system, of which 56 l.m fully sorted, 33 l.m partially sorted
- Received a further 134 l.m of material since July 2013 including the collections of Preben Jakobsen, Milner White and Brenda Colvin. Also, Gordon Patterson deposited his archive at MERL in 2016.

Engagement

1.1 Events

Discover the Landscape seminar series (February-March 2015)

FOLAR Brenda Colvin Study Day & AGM (March 2015)

MERL/LI Annual Lecture with James Corner (October 2015)

Discovering the landscape treasures exhibition at MERL (Jan-Mar. 2016) & University Library (April-June 2016)

FOLAR New Towns, Landscape & Gordon Patterson Study Day & AGM (March 2016)

1.2. Digital

Website and social media

1.3. Volunteers

10,000 hrs of voluntary time expended 2013-2016 (digitising eg. the large Tandy slide collection, book bib checking, book labelling, indexing)

1.4. Enquiries & Visits

Partnerships

- with the Landscape Institute and FOLAR
- LI collections feature in conversations with University academics and the potential for research and teaching
- Identified links with other collections held at MERL and other organisations such as the CPRE and the *Open Spaces Society*
- Begun to explore collaboration with other charitable organisations such as the *Garden Museum* and *Learning Through Landscapes*

Budget

As well as the generous funding from the LI received during these three years (£30k per year for 3 years) MERL has also benefited from just under £5000 worth of donations and which includes money raised from several duplicate book sales.

FOLAR WELCOMES CONTRIBUTIONS TO FUTURE ISSUES OF THE NEWSLETTER Contact: info@folar.uk

KEEP text to maximum 600 words which allows room for one or two images to accompany the piece on the page. Speculative articles are positively welcomed provided there is some evidence available at the time and the author is prepared, if necessary, to be corrected by others in a subsequent issue. That way all of us can learn something new.

EDUCATIONAL SUPPORTERS of the landscape collections at MERL, University of Reading

